



The Wickford C of E School



Newsletter

Headteacher: Mrs. Louise Johnson

Phone: 01268 733297

Website: www.hearts-wickfordcofe.uk

Email: wickfordcofe.admin@heartsacademy.uk

28th September 2018

ATTENDANCE

TARGET: 100%

WHOLE SCHOOL

ATTENDANCE FOR THIS

WEEK: 98.4%

CLASS ATTENDANCE:

Penguin: 100%

Wren: 100%

Puffin: 97.8%

Robin: 97.7%

Flamingo: 100%

Parrot: 93.8%

PADDINGTONS:

Penguin: Ellie, Louie, Ozan and Isla

Wren: Emily, Logan, Gabriel and Carter

Puffin: Charlie, Stanley, Teddy and Shalitta

Robin: Lily, Dylan, Olivia and Jake

Flamingo: Elsie, Mia, Max and Willow

Parrot: George, Tate, Ariella and Annabelle

GOLDEN TABLE:

Penguin: Ellie

Wren: Jimmy

Puffin: Ella

Robin: Max

Flamingo: Willow

Parrot: Treavon

Dear Parent/Carer,

This has been a week focusing upon 'Always More', our Christian focus this year. As a Christian school we will strive to always give and be more:

"With God's power working in us, God can do much, much more than anything we can ask or think of" Ephesians 3:20

ALWAYS ...

- More** to look forward to,
- More** respect to be shown,
- More** to someone's story,
- More** to be thankful for,
- More** to give,
- More** to learn and
- More** fun to be had.

Always more to find out

YEAR 2 WORKSHOP Many thanks to Miss Bristow and Mrs Springall for the Year 2 event that took place this week. We have appreciated the feedback and thanks. We are so glad to plan and deliver such sessions.

A NOTE ABOUT SIBLINGS DROPPING OFF AND COLLECTING CHILDREN

Please be aware that Franklins Way and Mount Road are both open exit points and as such we ask parents to be responsible for their children until seeing them into classes and into the care of their teachers.

PLAY EQUIPMENT Please could all parents and carers ensure that children including siblings, do not get out or use any of the play equipment in EYFS area or from the box outside Wren class. Thank you.

TOP TECH TIP Please see the attached regarding Minecraft.

WICKFORD CLC FUNDRAISING EVENT Please see the attached leaflet for Afternoon Tea.

BIG BREAKFAST A reminder that this will be on Thursday 4th October, doors open at 8am and we are looking forward to seeing you there, don't forget your pyjamas! In case you can't remember, here is a list of what we would like donations of to help this fun event go well. Thank you to those who have donated already.

Parrot - Milk - we will need quite a bit!

Flamingo - Cereal

Wren - Cereal

Puffin - Bread and butter

Robin- Jams, marmalades, fruit juices

Penguin- Pastries e.g. pain au chocolat, brioche, croissants.

SLEEPOVER MEETING Year 2 parents, please please do not forget the meeting on Monday 1st October at 4pm for the December sleepover. If you do not attend the meeting, your child will not be able to attend the sleepover.

SHARING ASSEMBLY Friday 5th October will be FS' first Sharing Assembly. This is where we invite parents/carers to join our Friday Assembly at 2.15pm so the children can share with you what they have been learning over the last few weeks. We also like them to bring in any outside achievements they may have such as; football medals, swimming certificates, Rainbows badges or anything else they are proud to share with us all.

SMART BOARDS We will be having 2 new Smart boards fitted in classrooms in the next couple of weeks. We would like to say a huge thank you to you all for your help in supporting this as FACES are funding one of the boards for us. As you are all part of FACES you have helped towards this, so thank you all.

LOST UNIFORM We have yet another missing fleece, this time it belongs to Ariella in FS. It is named with pink writing so please check you do not have it by mistake. Please also make sure all your children's clothes, PE kit, bags etc are named as we are still finding items that are not named.

MOMENTS OF LOVELINESS

This week we held a Talk Time to discuss the dinner hall and changes to the routines. Miss Harris met with: Lucas, Franklin, Hollie.B and Louie.T. Reflections from the meeting are as follows:

1. **Are you enjoying having the responsibility of using china plates, cutlery and glasses?**

Lucas said 'yes, this change makes me feel very grown up.

We love using the plates, makes us feel responsible.'

'Sometimes we do get scared we will break them but we are careful.'

2. **What is working well for you at lunchtime?** Pouring our own drinks instead of lunch ladies doing it. This shows how responsible we can be.

3. **What can we do to make lunchtimes using the china plates even better?** For Year 2 children to have own section to clean up their plates. To add decorations on tables for special occasions like Christmas and Easter. To include table mats to make it feel like a restaurant.

4. **Do you think it will be better and easier to have the knives and forks in a pot on the tables?** We would love to have pots or baskets that hold the knife and forks in the middle of the table, it'll be much easier to use.

Thank you to them! Mrs Boswell may well have some surprises up her sleeve soon enough as we consider table cloths and the 'perfect lunchtime experience'. We are very proud of all of the children.

HIRE THE HALL

Need to organise a children's party? Need some space to run an event? If so, please note that the school hall is available for hire. Prices start at £85 for a three hour slot, but we can arrange bookings for shorter or longer

periods to suit your needs. Just call into the office and let them know what you are planning. We will try our very best to help.

Another great week, well done all!

Mrs Johnson and the CofE team.



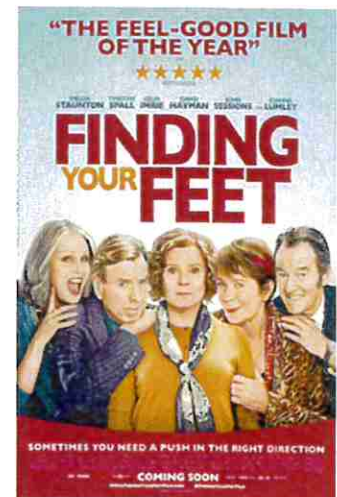
Wickford CLC

WICKFORD CLC FUNDRAISING EVENT

A Lovely Ladies Treat!

Come along to the Wickford CLC to enjoy a **traditional afternoon tea** provided by the Wildflower Travelling Tea Party, a **fun film quiz** followed by our specially selected film, **Finding Your Feet**, starring Joanna Lumley and Imelda Staunton, a rom com feel good film.

Fundraising for the CLC is now a necessity to help the Centre meet running costs. We hope you will support this exclusive opportunity to enjoy the excellent facilities of the CLC and the services of the Wildflower Travelling Tea Party whilst helping the Centre.



Limited spaces, tables of 6 or 8 available, book as a group or just come along and enjoy an afternoon with new friends. Bring your own alcohol if you wish, plenty of tea provided!
Free parking on site. Disabled facilities and hearing loop. Large screen display.

Please book and pay on line at www.wickfordextendedservices.org.uk

Prepayment must be made to reserve your place.

Please call Rachel Voller on 07795972477 for further information.

£20 per person

Saturday 6th October

4pm to 8pm

Wickford CLC, Grange Avenue, Wickford, Essex, SS12 0LZ

Booking Deadline: Monday 1/10/18



Minecraft is played by millions of children around the world, who can use their imagination to build three-dimensional worlds with virtual building blocks in a digital, pixelated landscape. It is classed as a 'sandbox game' which means players have the freedom to build their own creations with 'blocks' they collect and also have the opportunity to explore other people's creations with their characters. Players can choose from thousands of different 'servers' to join, which are created by other players, making every experience of Minecraft unique.

Minecraft has approximately **74m** users each month

AGE RESTRICTION **10+**

What parents need to know about MINECRAFT

GROOMING
The majority of users who play Minecraft are children, making it an 'appealing' gateway for groomers. It has been reported that some users have created worlds in Minecraft to lure young people into a conversation to ask for explicit photos. There have even been more serious cases in which children have been persuaded to meet these people in real life.

CYBERBULLYING & GRIEFING
In multiplayer mode, there is a live chat feature which allows players to talk to other players through text. The chat functionality includes basic filtering to block out external links and offensive language being shared, but this varies between each server. Griefing is when someone purposely upsets another player during the game. This can be done by ruining somebody's creation or generally doing something to spoil gameplay for another. Essentially, Griefing is a form of cyberbullying and can be extremely frustrating for players.

COMMUNICATING WITH STRANGERS
There are thousands of servers to choose from in Minecraft which are a single world or place created by the public, allowing users to play the game online or via a local area network with others. No two servers are the same and each server has its own individual plug-ins which are controlled by the creator. This means that some servers will allow communication with strangers.

VIRUSES & MALWARE FROM MODS
There are several websites that offer downloadable 'mods' which modify gameplay in a number of different ways. Most of the mods will be safe to use, but as they have been created by the public, they will often contain viruses that can infect your child's device and potentially try and find personal information from you or your child.

AGE RESTRICTION & FANTASY VIOLENCE
According to the ESRB 'Entertaining Software Rating Board', Minecraft is suitable for users aged 10+. Due to its 'Fantasy Violence', the ESRB states that the rating has been given as 'players can engage in violent acts such as lighting animals on fire and harming animals with weapons. Mild explosions are occasionally heard as players use dynamite to fend off creatures and mine the environment.'

CHILDREN MAY BECOME ADDICTED
As with other games, Minecraft is a game where players can keep returning, with constant challenges and personal goals to achieve. Children may find it difficult to know when to stop playing, becoming absorbed in the game and losing track of time.



National Online Safety Top Tips for Parents

DISABLE OR MODERATE CHAT
To avoid potentially inappropriate comments in a live chat, you can follow these steps to turn live chat off: 1. Select 'Options' 2. Toggle the Chat button to 'Hidden' or 'Commands Only'. Bear in mind that the chat feature is also where your child can enter commands during the game, so this may limit their game play.

MONITOR YOUTUBE TUTORIALS
Many Minecraft users turn to YouTube for video tips on improving their gameplay and discovering new techniques. Although many videos are age-appropriate, some include sexual references and bad language. We suggest watching Minecraft tutorial videos together with your child. If your child is under the age of 13, we suggest installing 'YouTube Kids' which provides a safer platform for children to find the content they want, safely.



SCAN 'MODS' FOR MALWARE
Minecraft 'mods' add content to games to give more options to interact and change the way the game looks and feels. But while 'mods' can bring fun for a child, it's important to consider that downloading and installing 'mods' could potentially infect their device with a virus or malware. In 2017, security company Symantec said that between 600,000 and 2.5 million Minecraft players had installed dodgy apps, which hijacked player's devices and used them to power an advertising botnet. Install a malware scanner on every device that your child plays Minecraft on, and make sure it's up-to-date.

PLAY IN 'CREATIVE' OR 'PEACEFUL' MODE
Even though the age limit is 10+, Minecraft can be quite overwhelming at times, especially for younger players or SEND children. We suggest limiting your child to play in 'creative mode' or 'peaceful mode' which takes away the survival element and removes the 'scarier' monster/zombie characters.

SET TIME LIMITS
With 'Gaming Disorder' becoming an official health condition, we suggest setting a reasonable time limit when playing Minecraft. Parents can use parental controls on devices to limit the time a child is playing games. It is worth having a conversation with your child to understand what 'mode' they are playing on the game. This may help you decide on how much time you would like them to spend playing on it. For example, a mini game will have an 'end', but this will depend on how long the game creator has made the game last. In 'survival mode', the game has no end as there is no goal to be achieved other than the child's own e.g. after they have built something.

CHOOSE SERVERS CAREFULLY
Advise your child to only enter servers with people they know and trust to protect them from engaging in conversation with strangers. Your child can also create their own multi-player server and share this with their friends to join in which is safer and more controlled than joining a stranger's server.

Sources:
<https://minecraft.net/en-us/article/minecraft-multiplayer-server-safety>
<http://parentinfo.org/article/staying-safe-on-minecraft>
<https://www.bbc.co.uk/news/uk-wales-38284216>
<https://support.xbox.com/en-gb/xbox-one-security/cannot-change-my-privacy-settings-1>
<https://ifehacker.com/a-parents-guide-to-playing-minecraft-with-your-kids-1788022798>
<https://www.mirror.co.uk/tech/new-minecraft-game-needs-caution-11251242>
<https://www.mirror.co.uk/news/uk-news/parents-using-online-computer-games-1023355>
<https://minecrafttips.com/minecraft-dangerous-for-kids-a-parents-guide>
<https://leahmoran.com/leahs-fabulous-family-friendly-minecraft-servers/>
<https://www.howtogeek.com/289985/how-to-set-up-minecraft-so-your-kids-can-play-online-with-friends/http://minemum.com/chat-settings>

THIS IS AN INDEPENDENT ONLINE SAFETY GUIDE AND IS NOT AN OFFICIAL MINECRAFT PRODUCT. THIS GUIDE HAS NOT BEEN APPROVED BY NOR IS IT ASSOCIATED WITH MOJANG

© National Online Safety Ltd
 This is not a definitive guide. Please always check with the app's support information to see if your security and privacy concerns are addressed.

www.nationalonlinesafety.com

